

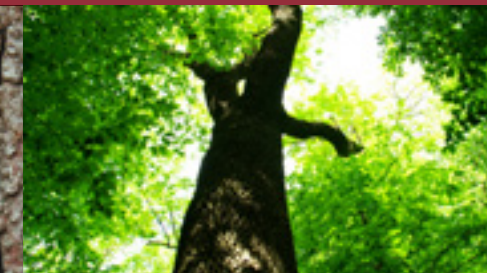
## GENERAL CATALOGUE

PROFESSIONALS IN CONSTRUCTION WOOD CUTTING MACHINES



[www.cml-engineering.it](http://www.cml-engineering.it)

MADE IN ITALY



OUR EXPERIENCE  
A PRECIOUS IN THE SERVICE  
OF TECHNOLOGY

# MULTI-RIP

E 350



J 250



SCA 500 EVOLUTION



SCA 320 T350 HS



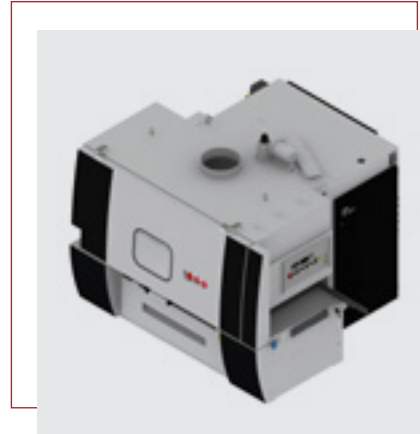
J 350



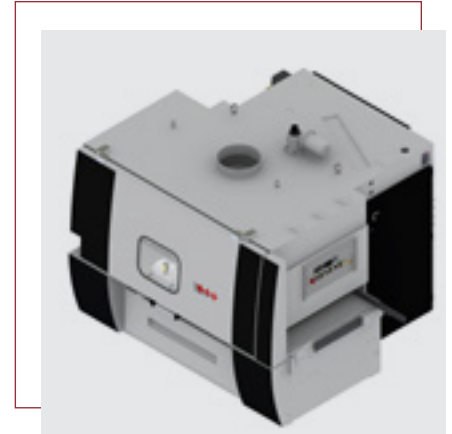
J 450



SCA 450 T500 HS



SCA 650 T700 HS



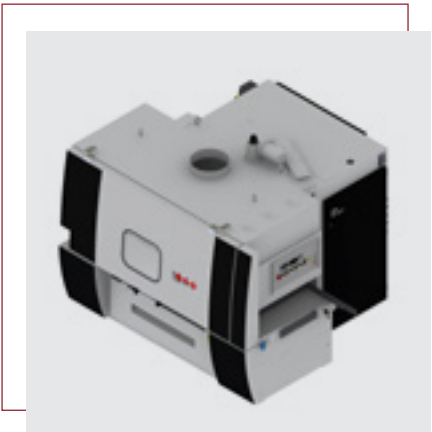
SCA 220 T250



SCA 320 T350



SCA 450 T500



SCA 650 T700



TYPES	MAX CUTTING THICKNESS	MAIN MOTOR POWER	FEED BELT WIDTH	MAX PASSAGE WIDTH PLANKS	MIN. LENGHT	WEIGHT
E 350	80mm (with blade to D.300mm)	Hp 20-25-30-40-50 Kw 15-18,5-22-30-37	350 mm	650 mm	600 mm	2000 kg
J 250	80mm (with blade to D.300mm)	Hp 20-25 / Kw 15-18.5	250 mm	520 mm (620mm)	500 mm (280mm optional for short pieces)	1120 kg
J 350	130mm (with blade to D.370mm)	Hp 30-40-50-60 Kw 22-30-37-44	350 mm	650 mm (800mm)	600mm (400mm optional for short pieces)	2100 kg
J 450	120mm (with blade to D.400mm)	Hp 60-75-100 Kw 44-55-75	500 mm	800 mm	600mm (400mm optional for short pieces)	5100 kg
SCA 220 T250	110mm (with blade to D.330mm)	Hp 20-25-30-40 Kw 15-18,5-22-30	250 mm	680 mm (800mm)	500mm (280mm optional for short pieces)	2600 kg
SCA 320 T350	130mm (with blade to D.370mm)	Hp 30-40-50-60-75 Kw 22-30-37-44-55	350 mm	840 mm (950mm)	500mm (350mm optional for short pieces)	2800 kg
SCA 450 T500	150mm (with blade to D.450mm)	Hp 60-75-100-125 Kw 44-55-74-92	500 mm	1000 mm (1100 mm)	550mm (400mm optional for short pieces)	5500 kg
SCA 650 T700	150mm (with blade to D.450mm)	Hp 60-75-100-125 Kw 44-55-74-92	700 mm	1150 mm (1250 mm)	650mm (450mm optional for short pieces)	5800 kg
SCA 500 EVOLUTION	145mm (with blade to D.450mm)	Hp 150/180 Kw 110-132	500 mm	850 mm	550mm (400mm optional for short pieces)	6000 kg
SCA 320 T350 HS	130mm (with blade to D.370mm)	Hp 30-40-50-60-75 Kw 22-30-37-44-55	350 mm Rollers feed	840 mm (950mm)	850 mm	3500 kg
SCA 450 T500 HS	150mm (with blade to D.450mm)	Hp 60-75-100-125 Kw 44-55-74-92	500 mm Rollers feed	1000 mm (1100 mm)	900 mm	6000 kg
SCA 650 T700 HS	150mm (with blade to D.450mm)	Hp 60-75-100-125 Kw 44-55-74-92	700 mm Rollers feed	1150 mm (1250 mm)	1000 mm	6500 kg



# EDGER

E 350 R



J 350 R



J 450 R



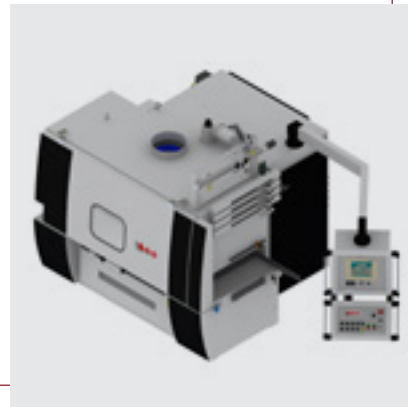
SCA 220 R T250



SCA 320 R T350



SCA 450 R T500



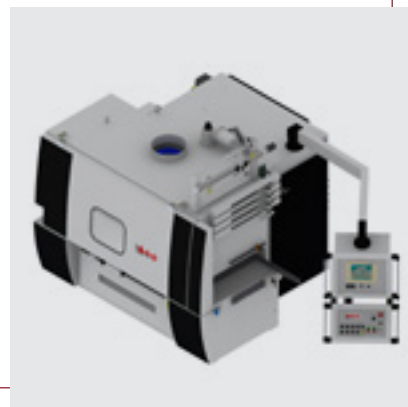
SCA 650 R T700



SCA 320 R T350 HS



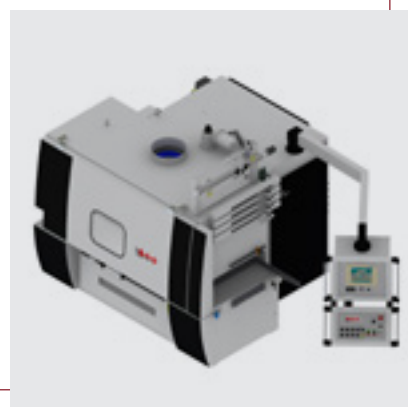
SCA 450 R T500 HS



SCA 650 R T700 HS



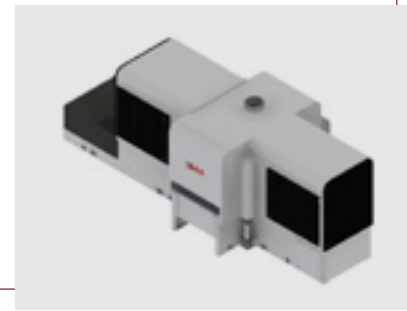
SCA 500 TELESCOPIC



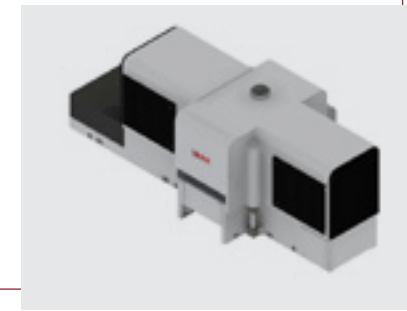
SCA 700 TELESCOPIC



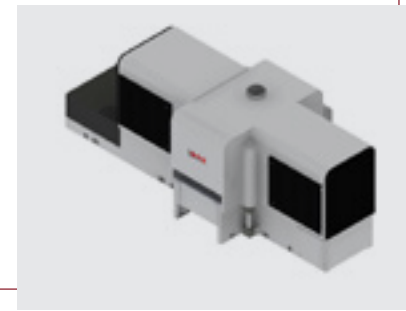
RV 500



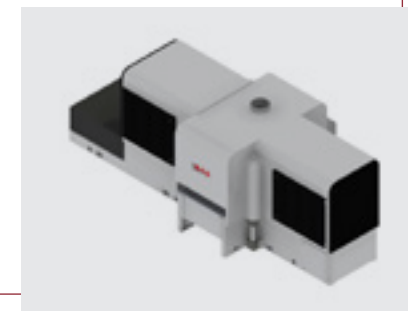
RV 700



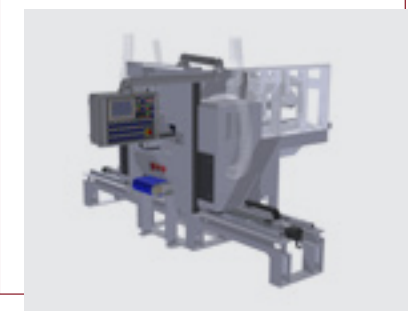
RV 1000



RV 700 HS



RS 600



TYPES	MAX CUTTING THICKNESS	MAIN MOTOR POWER	FEED BELT WIDTH	MAX MOVING BLADES	MAX PASSAGE WIDTH PLANKS	MIN. LENGHT	WEIGHT
E 350 R	80mm (with blade to D.350mm)	Hp 30 / Kw 22	350 mm	2	650 mm	600 mm	2100 kg
J 350 R	100mm (with blade to D.370mm)	Hp 30-40-50-60 Kw 22-30-37-44	350 mm	2	650 mm (800mm)	600mm (400mm optional for short pieces)	2200 kg
J 450 R	90mm (with blade to D.400mm) 80 mm for shot pieces	Hp 60-75-100 Kw 44-55-75	500 mm	4	800 mm	600mm (400mm optional for short pieces)	5400 kg
SCA 220 R T250	85mm (with blade to D.330mm)	Hp 20-25-30-40 Kw 15-18,5-22-30	250 mm	2	680 mm (800mm)	560mm (400mm optional for short pieces)	2800 kg
SCA 320 R T350	100mm (with blade to D.330mm)	Hp 30-40-50-60-75 Kw 22-30-37-44-55	250 mm	2	840 mm (950mm)	600mm (400mm optional for short pieces)	3000 kg
SCA 450 R T500	120mm (with blade to D.450mm)	Hp 60-75-100-125 Kw 44-55-75-92	500 mm	4	1000 mm	650mm (450mm optional for short pieces)	6000 kg
SCA 650 R T700	145mm (with blade to D.450mm)	Hp 60-75-100-125 Kw 44-55-74-92	700 mm	4	1150 mm	750mm (450mm optional for short pieces)	6500 kg
SCA 320 R T350 HS	130mm (with blade to D.370mm)	Hp 30-40-50-60-75 Kw 22-30-37-44-55	350 mm Rollers feed	2	840 mm	850 mm	3500 kg
SCA 450 R T500 HS	150mm (with blade to D.450mm)	Hp 60-75-100-125 Kw 44-55-74-92	500 mm Rollers feed	4	1000 mm	900 mm	6000 kg
SCA 650 R T700 HS	150mm (with blade to D.450mm)	Hp 60-75-100-125 kw 44-55-74-92	700 mm Rollers feed	4	1150 mm	1000 mm	6500 kg
SCA 500 TELESCOPIC	90 mm	Hp 60-75-100-125 kw 44-55-74-92	500 mm	4	1000 mm	650 mm	6000 kg
SCA 700 TELESCOPIC	90 mm	Hp 60-75-100-125 Kw 44-55-74-92	700 mm	4	1150 mm	750mm (400mm optional for short pieces)	6500 kg
RV 500	115 mm	Hp 30-40-50-60 Kw 22-30-37-44	700 mm	4	1000 mm	1000 mm	11.000 kg
RV 700	90 mm (115 mm)	Hp 30-40-50-60 Kw 22-30-37-44	700 mm	4	1000 mm	1000 mm	12.000 kg
RV 1000	115 mm	Hp 30-40-50-60 Kw 22-30-37-44	1000 mm	4	1300 mm	1000 mm	13.000 kg
RV 700 HS	65mm (with blade to D.350mm) 50mm (with blade to D.300mm)	2 x 75 kw	700 mm Roller feed	6	650 mm	1200 mm	12.000 kg
RS 600	160 mm	2X Hp 30 / 2X Kw 22	100 mm	2	700 mm	600 mm	3200 kg

## DOUBLE SPINDLE MULTI-RIP

SCA 350 ST 350



SCA 400 BT 500



SCA 400 B



SCA 400 B/O



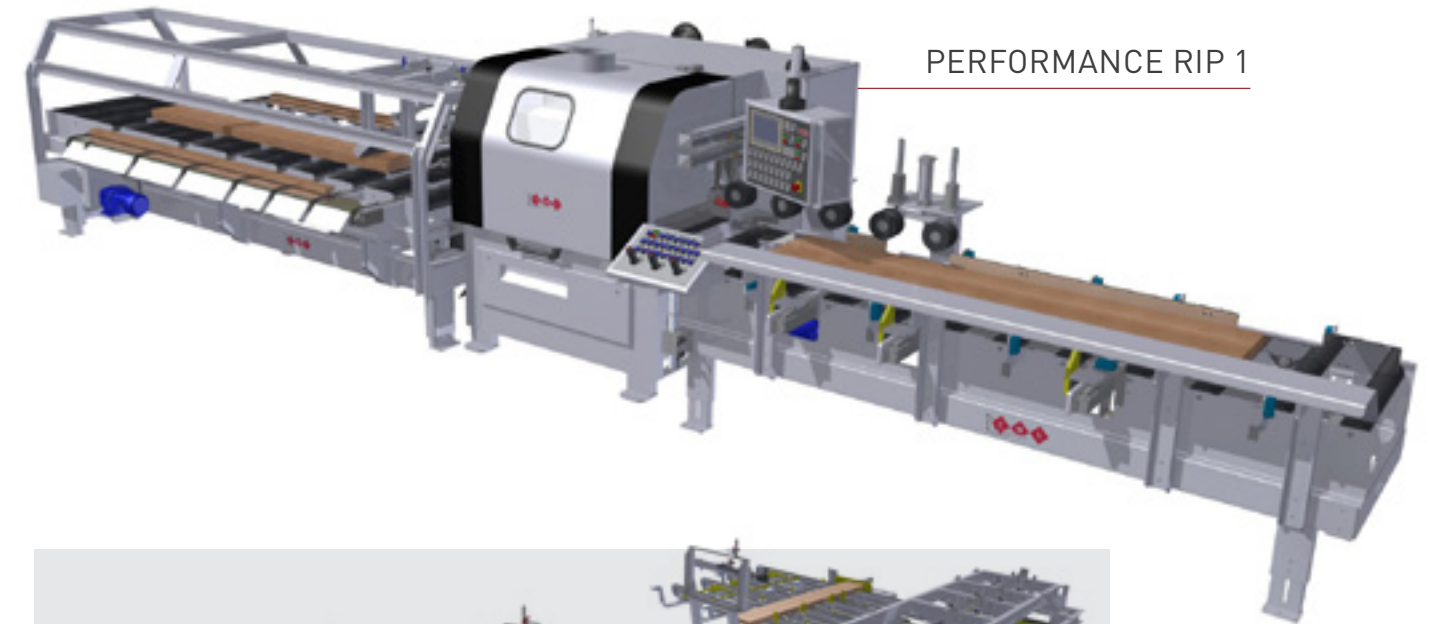
SCA 500 B



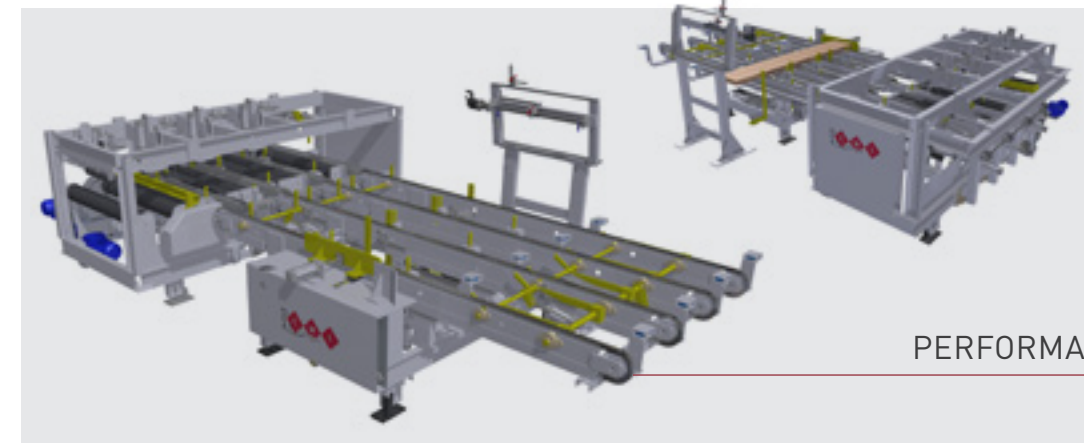
SCA 500 B/O



## PLANTS FOR SOLID WOOD

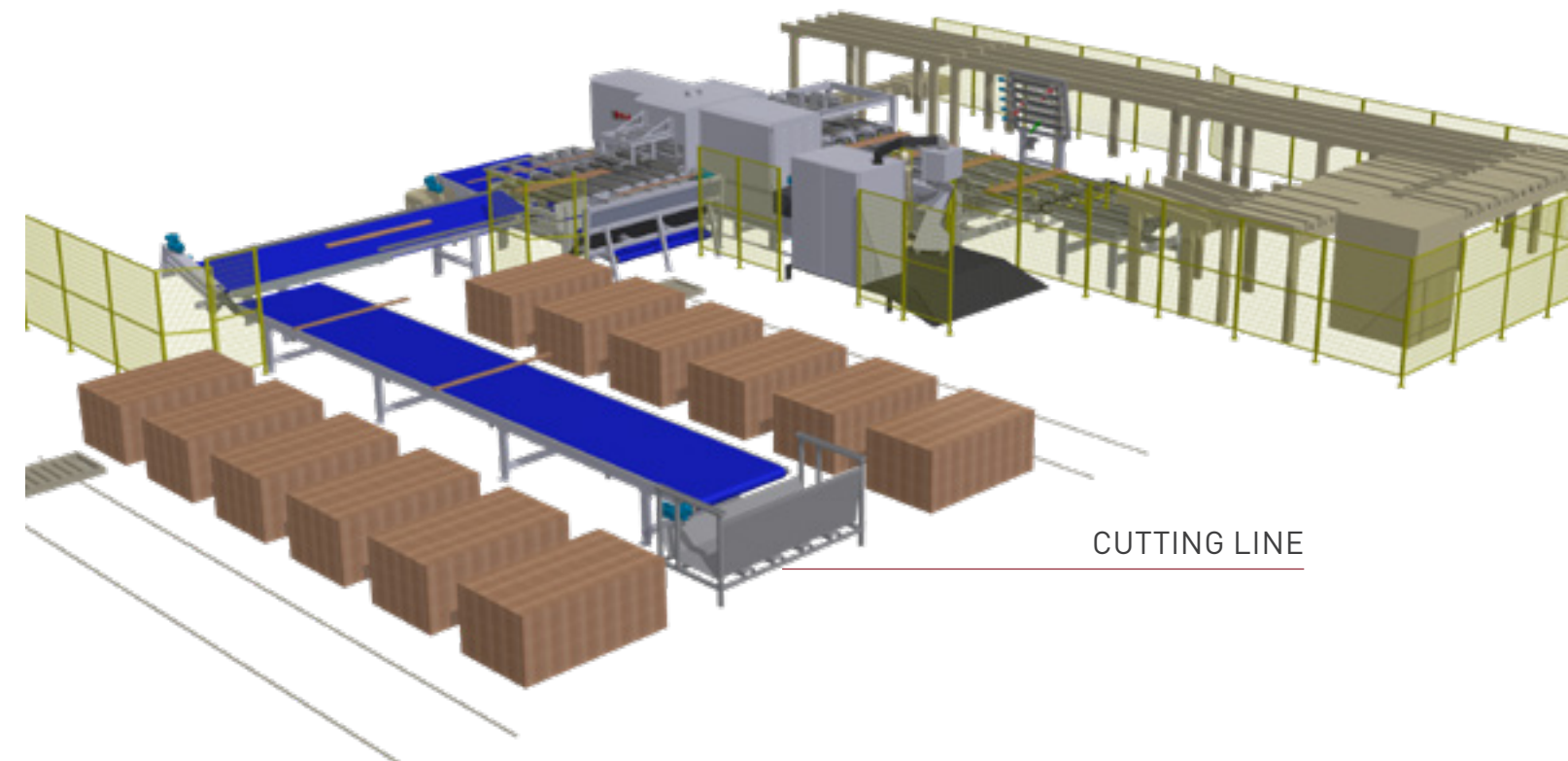


PERFORMANCE RIP 1



PERFORMANCE RIP 2

TYPES	MAX CUTTING THICKNESS	MAIN MOTOR POWER	FEED BELT WIDTH	MAX PASSAGE WIDTH PLANKS	MIN. LENGHT	WEIGHT
SCA 350 ST 350	200mm (with blade to D.350mm)	Hp 30-40-50-60-75 Kw 22-30-37-44-55	500 mm (infeeding belt) 500 mm (outfeeding belt)	800 mm	700 mm	6500 kg
SCA 400 BT 500	270mm (with blade to D.450mm)	Hp 75-100-125-150-180 kw 55-75-92-110-135	500 mm	800 mm	800 mm	9500 kg
SCA 400 B	270mm (with blade to D.450mm)	Hp 75-100-125-150-180 Kw 55-75-92-110-135	600 mm (infeeding belt) 700 mm (outfeeding belt)	800 mm	900 mm	10.000 kg
SCA 400 B/O	270mm (with blade to D.430mm)	Hp 75-100-125-150-180 Kw 55-75-92-110-135	600 mm (infeeding belt) 700 mm (outfeeding belt)	800 mm	900 mm	10.000 kg
SCA 500 B	160mm (with blade to D.350mm)	Hp 75-100-125-150-180 Kw 55-75-92-110-135	600 mm (infeeding belt) 700 mm (outfeeding belt)	800 mm	800 mm	10.000 kg
SCA 500 B/O	160mm (with blade to D.350mm)	Hp 75-100-125-150-180 Kw 55-75-92-110-135	600 mm (infeeding belt) 700 mm (outfeeding belt)	800 mm	800 mm	10.000 kg



CUTTING LINE